



# Municipal Infrastructure & Planning



“Our experience with JLR has been **excellent** and we are **pleased** to provide them with our **highest recommendation.**”

Matt Tracey, The City of Quinte West

Serving local  
**Municipalities**  
since  
**1955**

Our Approach

- When we take on a project, our first priority is to understand your needs and objectives. We use that understanding to develop plans and robust solutions that work for you today, and anticipate your needs in the future.

Engaged in Your Community

- At JLR, we know that the starting point for any successful project is an in-depth understanding of what our clients need today and where they want to go tomorrow.
- With offices across Ontario and a robust network of local experts with key community insight, we’re perfectly situated to provide your projects with the advantage of local presence and authentic engagement. We work closely with your team and stakeholders in your area to develop a comprehensive understanding of your infrastructure, its end users, and their diverse needs.
- This process provides our team with the nuanced local knowledge we need to deliver designs that work well for you today and that both anticipate and accomodate your objectives for the future.



Strategic Solutions

- The real value of working with JLR is not just in what we do, but in how we do it.
- We provide you with a dedicated multidisciplinary team at the outset of your project that is assembled with your specific needs in mind. This responsive and collaborative approach to project delivery gives us an unmatched ability to strategically sequence schedules, identify cost-saving measures, and anticipate issues before they arise.
- Our approach is deliberately structured to deliver integrated solutions and successful project outcomes.

Our Corporate Numbers

Founded in

**1955**

Employee Owned

**100%**

Projects Completed in

**78**

Countries

**80%**

Business from Repeat Clients

**100%**

Canadian Owned



Who We Are

- J.L. Richards & Associates Limited (JLR) is an employee-owned, Canadian company that provides multidisciplinary engineering, architecture, planning, and project management services. Founded in Ottawa in 1955, we now have six offices across Ontario.
- Municipal engineering has been an integral part of our practice since our firm was first founded. In the years since, JLR has completed successful projects with numerous municipalities ranging in population density and geographic size. Our dedicated Municipal team possesses an incredible breadth of expertise and is equipped to provide specialized solutions for diverse clients in this sector.
- We have the knowledge and experience needed to develop plans and designs that meet your unique needs.



- 1. Nepean Creek Bridge Culvert Renewal - Ottawa, ON
  - 2. Blue Mountain Clarsburg Master Plan Public Consultation Meeting - Collingwood, ON
  - 3. Road Reconstruction - Ottawa, ON
  - 4. Innovation Drive Water Storage Tank - Kingston, ON
  - 5. Prince of Wales Drive and Dynes Road - Ottawa, ON
- Cover: Village of Manotick Municipal Servicing





# Municipal Engineering



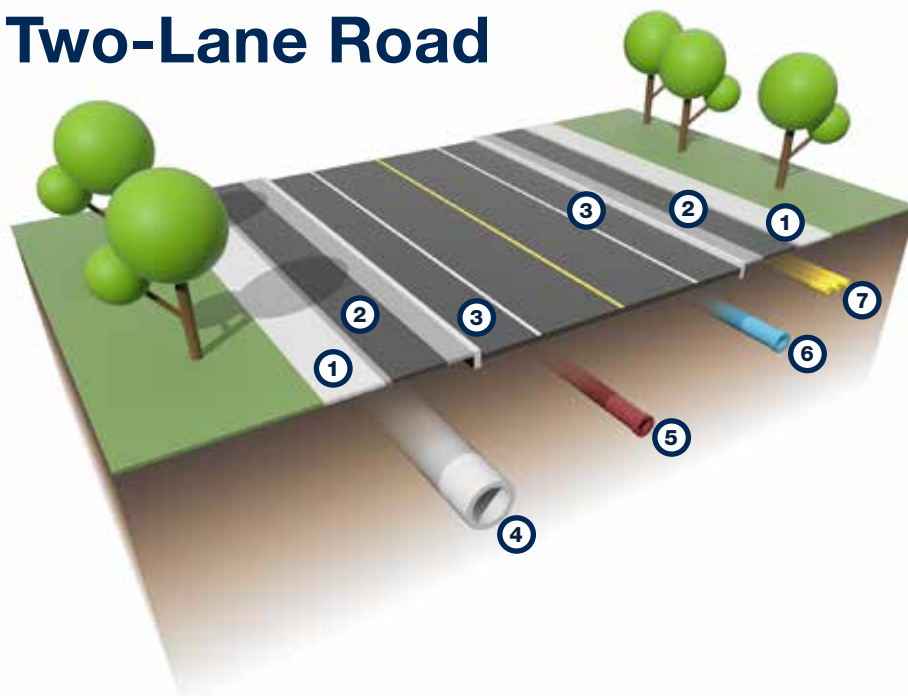
Establishing, maintaining, and renewing infrastructure to meet your needs and address ever-changing regulatory requirements can be a complex and overwhelming process. **Luckily, we like a challenge.** Our team looks at your infrastructure issues and community-specific constraints differently. What you may see as problems, we see as a perfect puzzle—challenging and solvable.

JLR works with you to understand the specific factors that affect your rehabilitation and municipal renewal projects. We draw on our expertise in risk mitigation, consultations and approvals, sustainable design, life cycle value, and aging infrastructure challenges to provide you with engineering that supports a **livable community built on long-term results.** We have specialized and extensive experience in municipal road integrated rehabilitation, and have helped countless clients improve their roads, sanitary and storm sewers, water infrastructure, sidewalks, and pathways to create **innovative and integrated streetscapes.** No matter what pressures are put on your project, we'll create a cost-effective plan and robust technical solution that results in reliable services for your citizens.



## Two-Lane Road

1. Sidewalk
2. Cycle Track
3. Parking
4. Storm Sewer
5. Sanitary Sewer
6. Watermain
7. Utilities



What you may see as problems,  
we see as a perfect puzzle—  
**challenging and solvable.**

1. Sandridge Road CSO Storage and Conveyance - Ottawa, ON
2. Kanata Town Centre Stormwater Management Facility - Kanata, ON
3. Prince of Wales Box Culvert Replacement - Ottawa, ON
4. Nepean Creek Culvert Renewal - Ottawa, ON



# Planning & Land Use



1

# Geographic Information Systems

Today, municipalities and industries alike have access to more data than ever before, and many are learning that the support of Geographic Information Systems (GIS) experts allows them to **put that data to good use.**

As early adopters of GIS technology, our team has the knowledge to analyze complex geographic data sets, draw useful conclusions, and create important efficiencies for our clients. Today, JLR uses a cloud-based GIS program that eliminates the need for municipalities to invest in equipment and programs of their own.

Using GPS-enabled devices, customizable web mapping applications, and detailed GIS data, JLR can create **purpose-built maps** of key assets that **collect your site-specific data** all in one place.

Our team puts state-of-the-art GIS technology to work for you.

Planning services are critical to our multidisciplinary and **integrated project delivery** approach. Our services support both private and public sector clients, as well as municipal, provincial, and federal agencies.

We advise on land use and interpret the **regulations and policies** that govern it. We also provide master planning, concept development, mapping, geographical information system services, and studies to facilitate ongoing operations and to accommodate growth.

We work with **private and public clients** to assess existing land uses, determine development options, and obtain input from key community stakeholders to provide comprehensive evaluations of options for development.

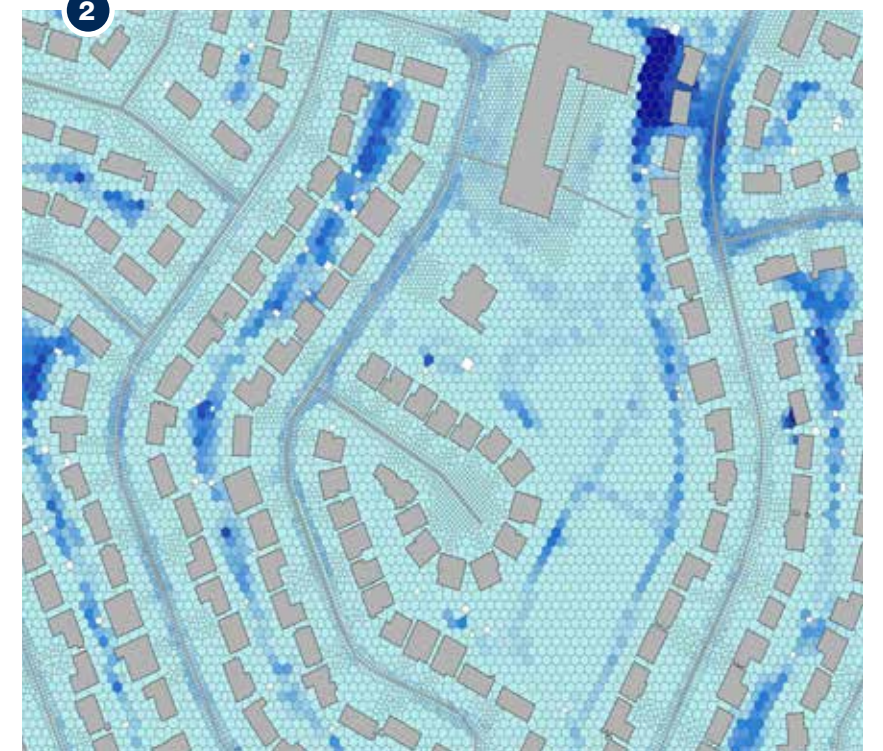
**We support your project** by helping you navigate policy and regulatory standards, and by preparing bylaw reviews, municipal planning, assessments, applications, official plans, and zoning amendments on your behalf to successfully push your plans forward.



4



3



2

1. Community Consultation Meeting - Rankin Inlet, NU
2. 2D Dual Drainage Modelling Project - Ottawa, ON
3. Municipal GIS - Carleton Place, ON
4. Kanata Town Centre, Elsinore Lane - Ottawa, ON





# Land Development Engineering

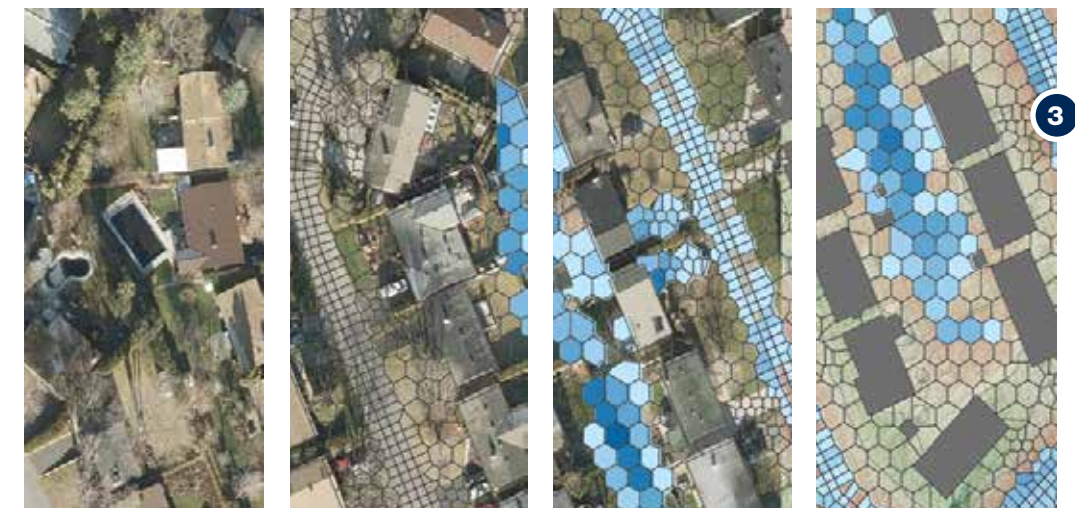
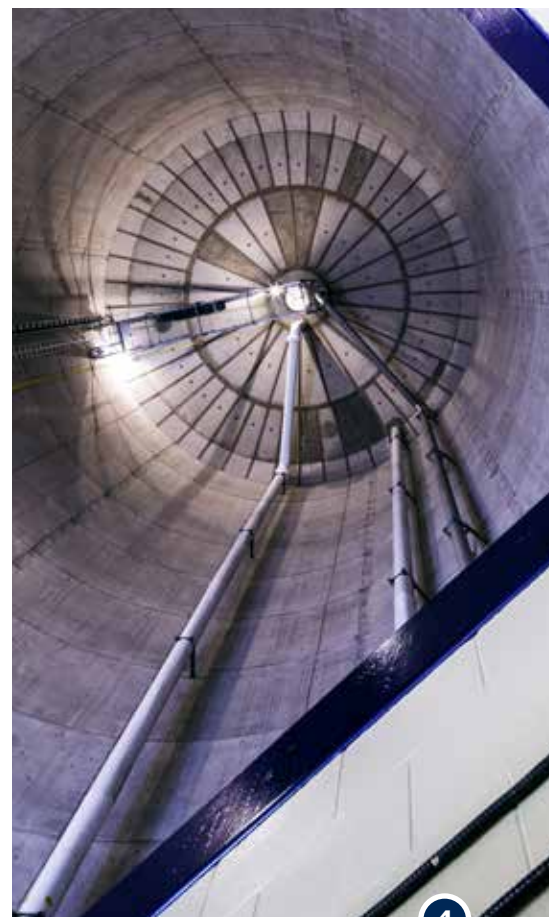


# Water Resources

Residents rarely consider the complex engineering that goes into turning a vacant plot into a dynamic development they can enjoy every day. Frankly, **that is exactly how we like it.** When we're engaged in engineering for a residential or commercial development, we strive to create infrastructure that works well so your occupants never have to question their safety and reliability.

We engineer systems that account for existing conditions, regulatory requirements, environmental factors, and budgetary limitations. We have the expertise to adapt to the diverse demands of **new developments or infill projects.**

Site plans, roadways, grading, stormwater management, underground infrastructure, and utilities services—whatever infrastructure your development needs, **we will design it right.**



As populations grow and climate conditions continue to change, innovation in water and stormwater infrastructure has never been more important.

Our dedicated team of water resource engineers has the insight and experience to ensure your systems are both **economically and environmentally sustainable.** We use state-of-the-art water and water distribution system modelling techniques to validate the reliability of your infrastructure, identify vulnerabilities, and develop **practical plans** for any new facilities or upgrades needed.

We have the tools and expertise to handle any water quality or quantity challenges. Our team will work with you to develop **sound solutions** to suit your water resource and stormwater management needs.

1. Bridlewood Subdivision - Ottawa, ON
2. Palladium Auto Park Stormwater Management Facility - Kanata, ON
3. Stormwater 2D Modelling - Barrhaven, ON
4. Innovation Drive Water Storage Tank - Kingston, ON
5. City of Brantford Administration Building and Vehicle Garage - Brantford, ON



# Active Transportation

Our clients recognize that creating infrastructure that supports active transportation is a significant factor in fostering community sustainability and enhancing user satisfaction.

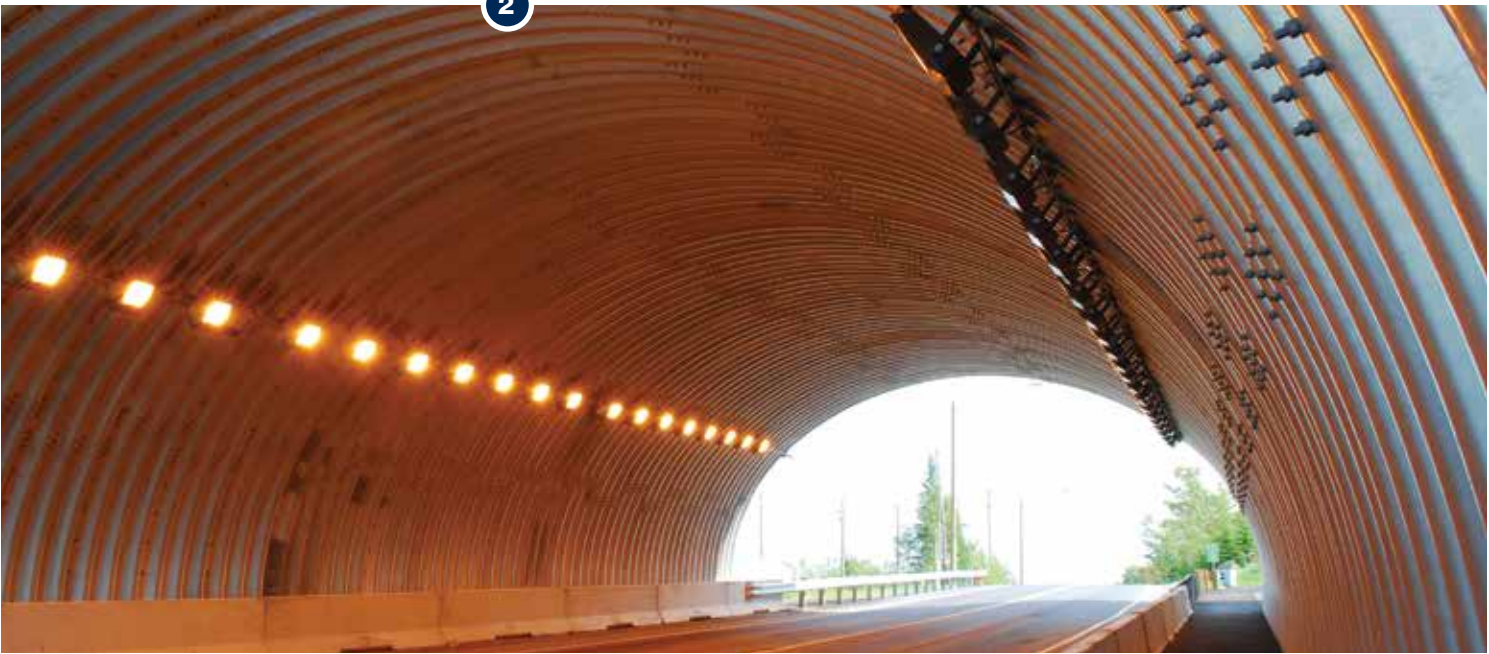
With in-depth expertise in integrated infrastructure and comprehensive approaches to transportation planning and complete street design, our team has the capability to adapt to existing conditions or use new construction opportunities to optimize space and urban right-of-way. Our goal is to ensure that active transportation policies and goals are implemented safely, efficiently, and effectively.

# Transportation



## Transit Facilities

We understand that transit facility projects are about more than designing buildings. The facilities we design in this sector represent opportunity, providing new avenues for our clients to improve transit services, enhance efficiency, and to protect key assets that are integral to their transit systems.



## Transportation Structures

Our Civil, Structural, and Planning teams have been involved in numerous transportation structure and culvert projects. We have specialized expertise in both public and large private sector projects, and are skilled at tailoring our approach to meet the demands and requirements of diverse clientele.

Our highly capable team can successfully deliver any project, from OSIM inspections, to structural rehabilitation, to new construction of culverts and bridges.

## Talk To Us Today



**Jane Wilson** M.Sc., P.Eng.  
Senior Associate; Municipal Infrastructure and Planning Market Chief  
343-804-5374  
jwilson@jlrichards.ca



**Ryan Matthews** M.Sc., P.Eng.  
Executive Director; Municipal Market Chief  
613 728-3571  
rmatthews@jlrichards.ca



**Philip Reeve** P.Eng.  
Executive Director; Senior Civil Engineer; Practice Lead, Municipal  
613 728-3571  
preeve@jlrichards.ca



**Jason Ferrigan** RPP, MCIP, MSc.PI.  
Principal Associate; Chief Planner; Practice Lead, Planning  
705-806-4422  
ferrigan@jlrichards.ca

[www.jlrichards.ca](http://www.jlrichards.ca)

Architecture  
Civil Engineering  
Electrical Engineering  
Energy Systems Engineering  
Environmental Engineering  
Mechanical Engineering  
Planning  
Project Management  
Structural Engineering

Connect with us:

 **LinkedIn**

 **YouTube**